



SPYNEL-M

Wide Area Surveillance Solution



5Mpix day/night
panoramic video



Uncooled LWIR
Thermal Sensor



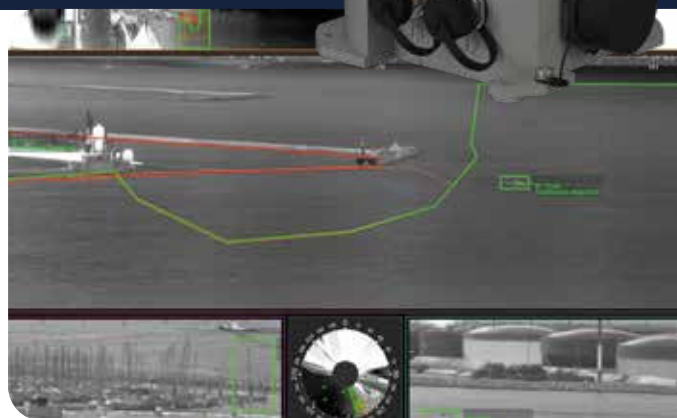
Human detection
range up to 700m



360° PANORAMIC DETECTION ANYWHERE, ANYTIME

SPYNEL® are proven wide-area surveillance solutions, acquiring real-time panoramic thermal images with automatic detection, tracking and classification capabilities thanks to the integrated CYCLOPE software.

SPYNEL®-M is the lightest and most compact sensor in the SPYNEL® series. Acting as an infrared radar, it brings the highest technology at a fair cost for permanent or temporary surveillance of sensitive locations.



APPLICATIONS










BENEFITS

- Day & night panoramic imaging even in adverse weather conditions
- Human, vehicle or RHIB detection capabilities
- Uncooled thermal technology: maintenance-free
- Compact and lightweight for very fast deployment
- Automatic tracking & classification of any ground/sea threats
- Passive operation unlike radars (undetectable, no EM disturbance)
- Proven, reliable and COTS technology
- All events recorded over 360°

SPYNEL-M

Wide Area Surveillance Solution

TECHNICAL SPECIFICATIONS

	SPYNEL-M 600 W	SPYNEL-M 600 N
Horizontal FOV	360°	360°
Vertical FOV	35.5° (-24° to +11.5° by default)	18° (-15° to +3° by default)
Vertical adjustable tilt	-18°/+18°	-18°/+18°
Scanning rate	1 Hz (360° / sec)	0.5 Hz (360° / 2sec)
Sector scan rate	1.5 Hz on 180-degree sector 2.5 Hz on 90-degree sector ...	0.8 Hz on 180-degree sector 1.5 Hz on 90-degree sector ...
Infrared detector type	Uncooled LWIR FPA (≥600 pixels horizontally)	Uncooled LWIR FPA (≥600 pixels horizontally)
Image resolution	2.6 Mpixels	5.2 Mpixels
Video output and control	TCP/IP	TCP/IP
Optional communication	Wireless	Wireless
Dimensions (Diam. x Height)	125 mm x 200 mm	125 mm x 200 mm
Optional visible camera	Panoramic 2x180°	Panoramic 2x180°
Weight	1.8 kg	1.8 kg
Power supply	24V / PoE+	24V / PoE+
Power consumption	8 W	8 W
Operating Temperature Range	-40°C / +60°C	-40°C / +60°C
Protection Standard	IP 66	IP 66
Detection/Recognition ranges for Human:  Vehicle:  RHIB: 	<div>  Detection Up to 400 m </div> <div>  Recognition Up to 125 m Up to 250 m Up to 250 m </div>	<div>  Detection Up to 700 m Up to 1.5 km Up to 1.5 km </div> <div>  Recognition Up to 250 m Up to 500 m Up to 500 m </div>

CONTROL AND DISPLAY SOFTWARE



Advanced video processing

Artificial Intelligence, smart image enhancements, detection/classification algorithms, data fusion



Multi-layer display

Real-time panoramic or zoom display, geolocation of threats



High integration capabilities

ONVIF, H264, XML, MIME, TCP/IP, Client/Server



Advanced Alarm Management

Track analysis to trigger alarms and customized security actions

DRI ranges according to Johnson criterium and STANAG standards

Range values represent optimal performance, which will vary depending on target size, clutter environment, atmospheric conditions and sensor operational settings

Above information is subject to changes without notice

Contact us : hgh@hgh-infrared.com | hgh-infrared.com



Enlighten the Unseen

EUROPE

10 rue Maryse Bastié
91430 Igny, FRANCE
Phone: +33 1 69 35 47 70

USA

1240 E Campbell Rd Ste. 200,
Richardson, TX 75081, USA
Tel: +1 805 965 6701

ASIA

1 Paya Lebar Link, Unit 04-01
Singapore 408533
Phone: +65 6955 8585